



EPFL
RESSLab



Fire protection engineering

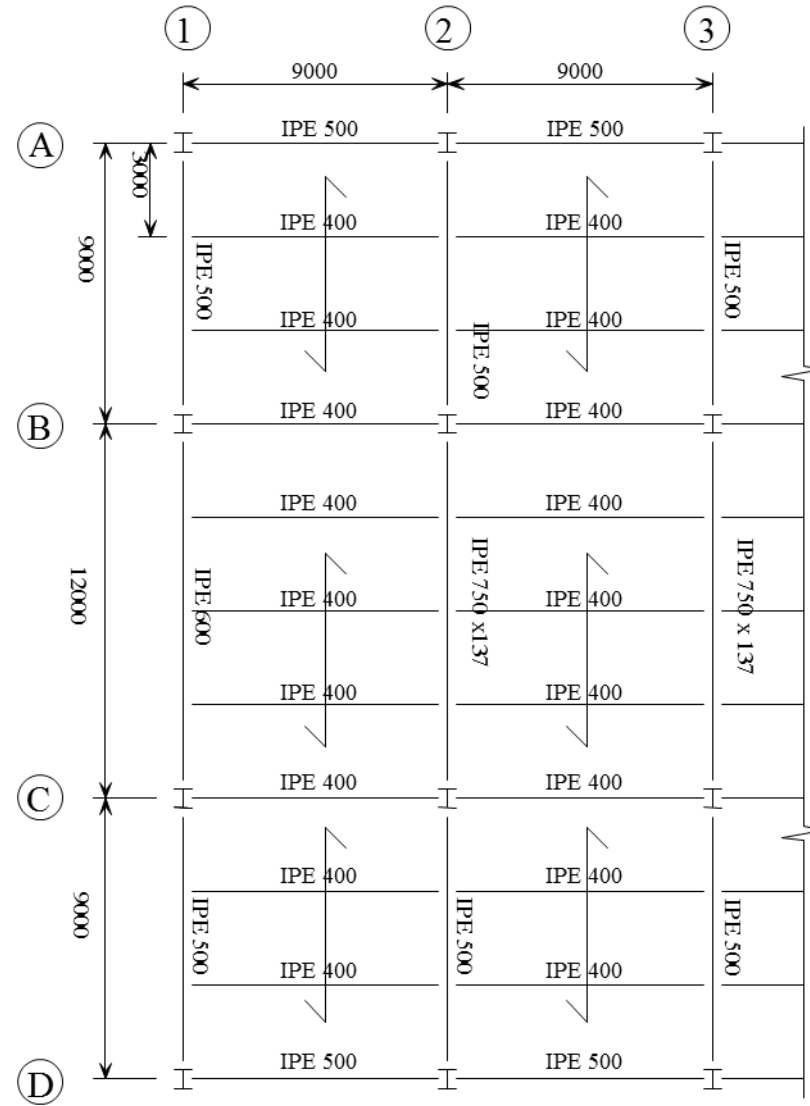
Exercise - part 2

Olivier Burnier, civil engineer HES-UTS
Fire protection expert with federal diploma

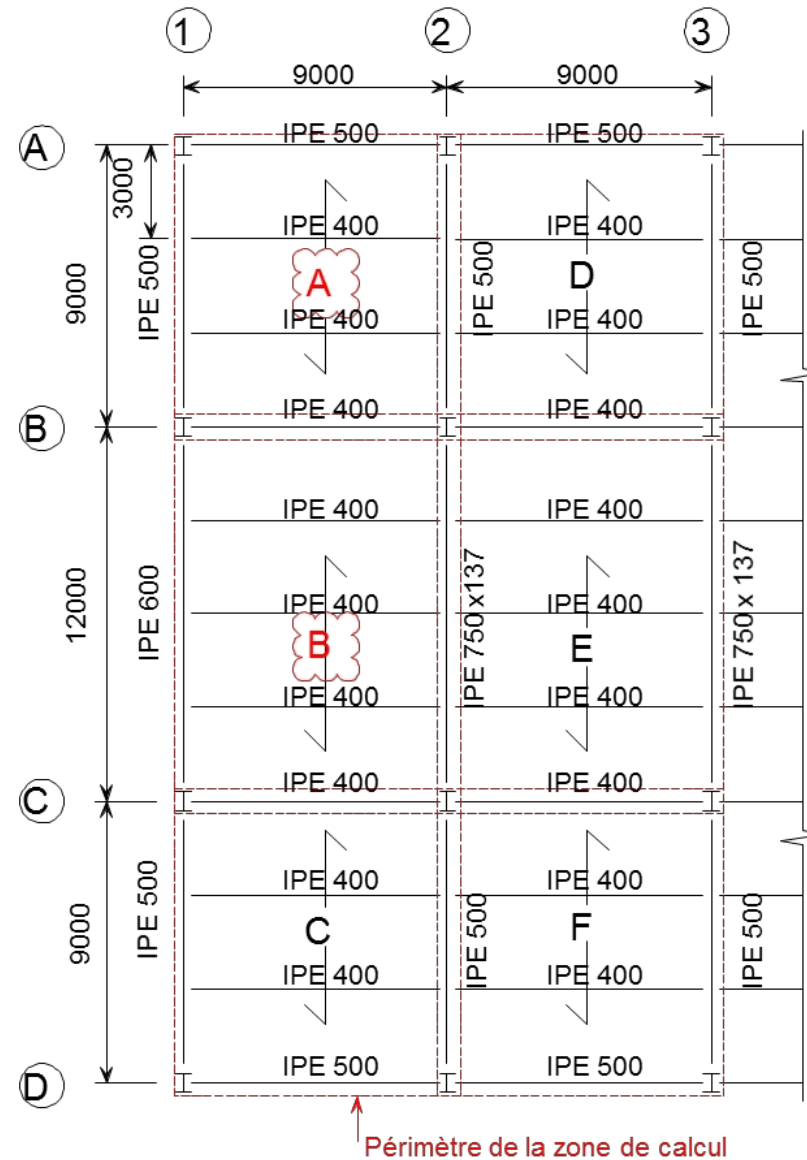
Contents

- Frame of the structure
- Details of charges
 - Under normal operating conditions (cold)
 - In the event of fire (hot)
- Calculating floor resistance
 - A zone
 - Zone B
- Construction details

Frame of the structure



Frame of the structure



Contents

- **Normal (Cold)**

- Main variable action: 5.0 kN/m².
- Accompanying variable action: 0.0 kN/m².
- Dead weight including beams, excluding slab: 1.2 kN/m².
- Calculated dead weight of the floor including reinforcement: 2.28 kN/m².

- **Fire (Hot)**

- Permanent load weighting factor: 1.0
- Weighting factor for variable costs : 0.5